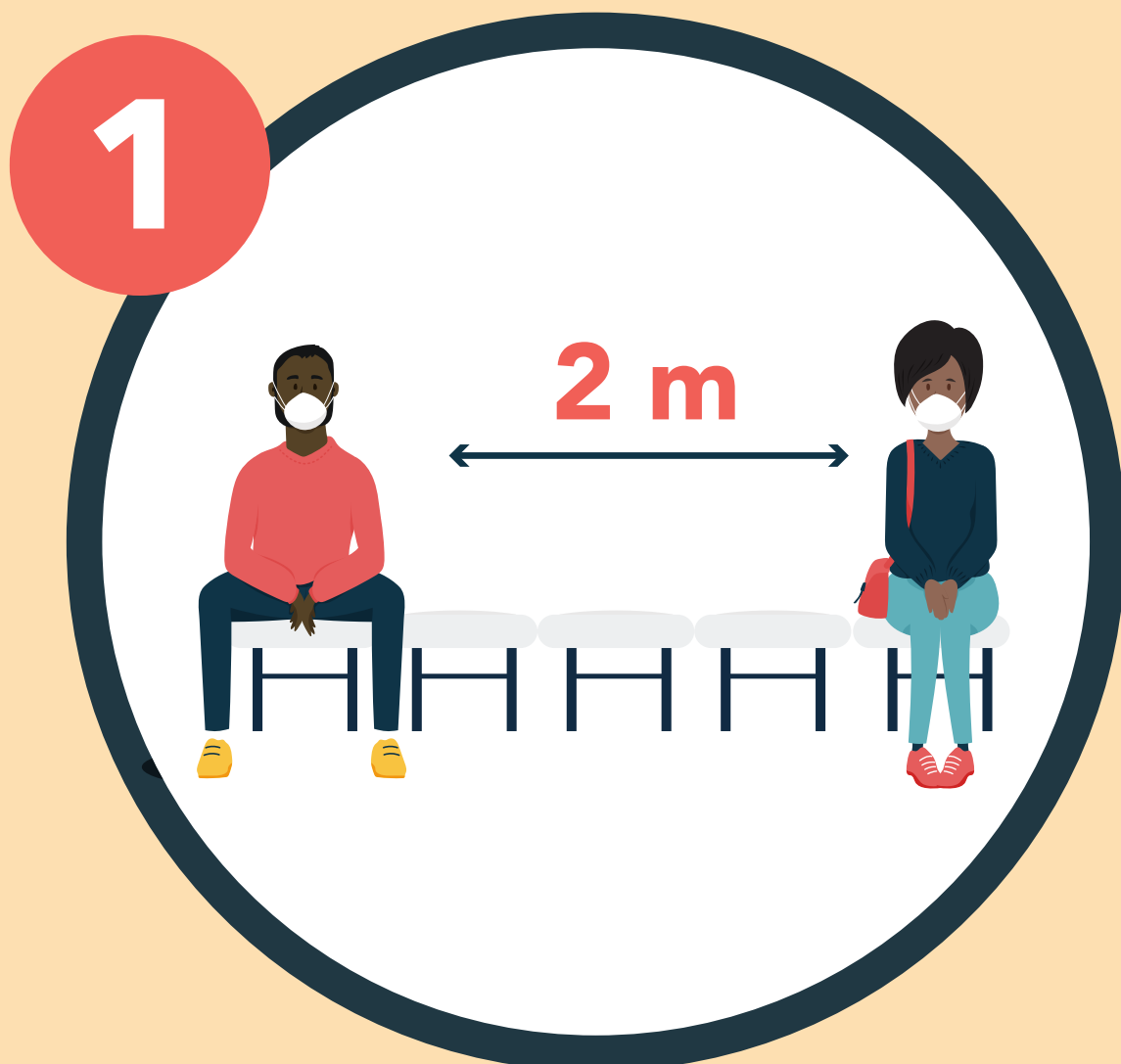


Be Safe In Places Of Worship

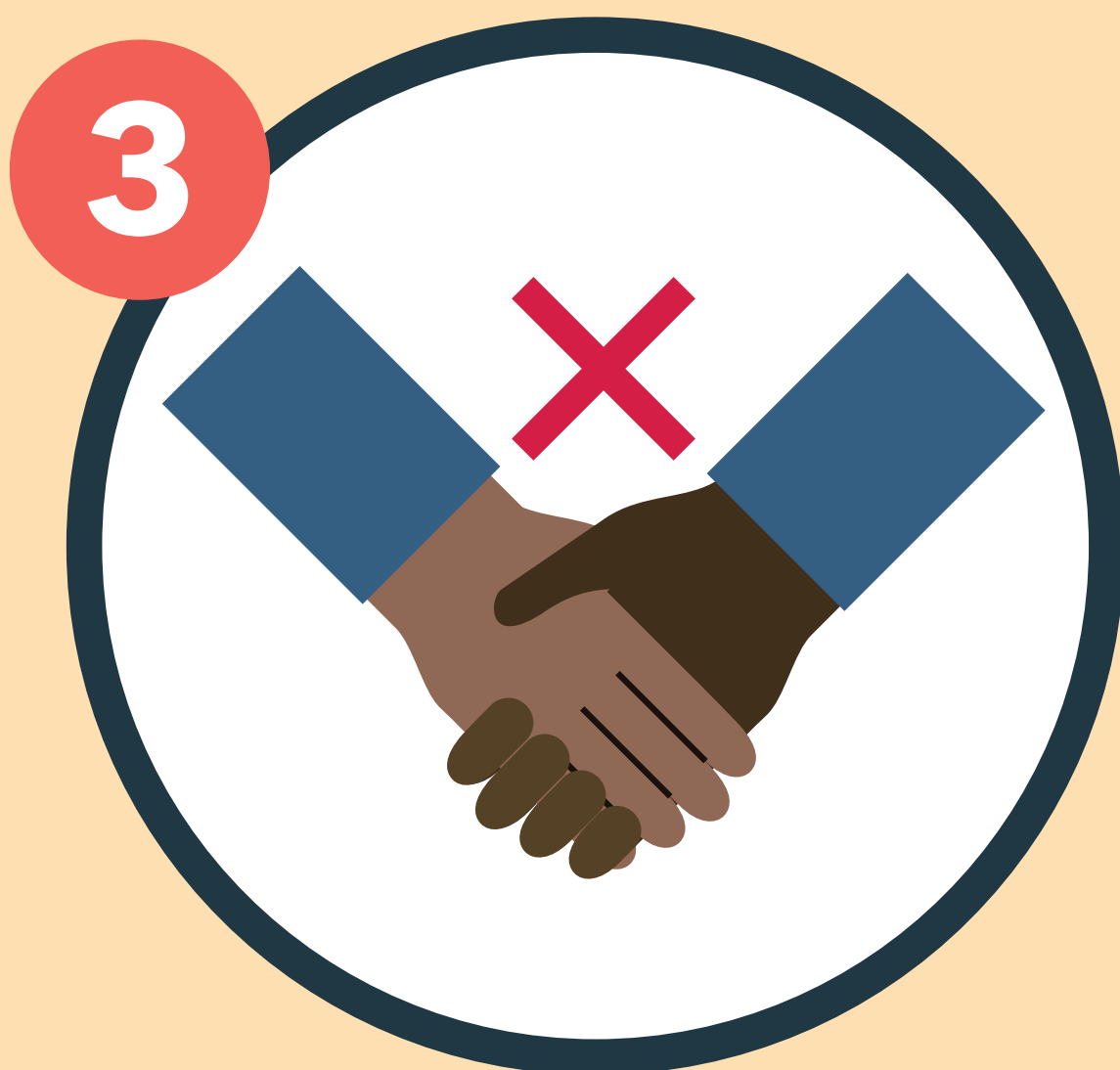
Always



Make sure you maintain at least 2 metre distance when entering, leaving and during the service.



Wear a mask/cloth covering your nose and mouth.



Greet other congregants with a smile but do not shake hands or touch them.



Wash or sanitize hands before entering the place of worship for 20 seconds.

Illustrations: www.freepik.com

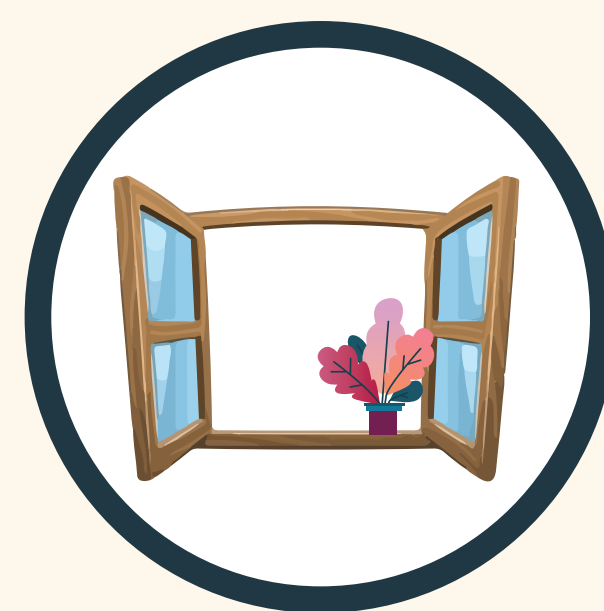
Other Safety Measures



Don't touch, hug or share objects.



If experiencing flu-like symptoms, stay home for 14 days.



Keep windows and doors open for air circulation or hold services outside with space.



When service is over, remain seated until an usher directs each row can leave.

We have a responsibility to protect each other!